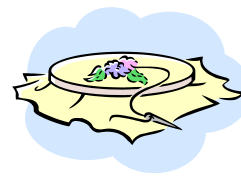


For Office Use Only

Date Received: _____ App. # _____ Space # _____



62nd Annual Florida Forest Festival Arts & Crafts Show October 28, 2017



REPEAT VENDOR YES NO

Name _____

Business Name _____

Address _____

City, State, Zip Code _____

Phone _____ E-Mail _____

Items Sold _____

- 12' x 12' \$60.00
 - 12' x 24' \$95.00
 - 24' x 24' \$165.00
 - Electricity 20 Amp \$20.00
- No Generators Allowed!
- RESERVED PARKING FOR VENDORS INCLUDED**
(reserved parking pass can be picked up upon arrival)

Space Amount: \$ _____

Electrical Hookup \$ _____

Reserved Parking \$ _____

Late Fee: \$ _____

TOTAL ENCLOSED \$ _____

Applications submitted after October 14, 2016 will pay a \$25.00 late fee. No Waivers and NO EXCEPTIONS!
NO REFUNDS AFTER OCTOBER 1, 2016.

A service charge of \$20.00 will be assessed for all returned checks.



Florida Forest Festival
Tree Capital of the South

Please return your complete application with a check made payable to the Florida Forest Festival Office:

Florida Forest Festival Phone: 850-584-8733
 PO Box 1062 Fax: 850-584-8030
 Perry, FL 32348



**62nd Annual Florida Forest Festival
October 28, 2017
Forest Capital State Park
204 Forest Park Drive
Perry, Florida 32347
(U.S. Highway 19 South)**

The annual Arts and Crafts Show and Sale will be featured again this year during the celebration of the Florida Forest Festival. The month's activities will peak on Saturday, October 28. Activities begin at the Forest Capital State Park with the platform ceremonies at 12:00 noon. Then you are invited to join us for the World's Largest Free Fish Fry. During the afternoon, you can enjoy live entertainment, children's games, a carnival, food and lots of fun. Last year we had nearly 20,000 visitors for the Festival. We are looking forward to another great turnout and would like to have you join in the celebration!

PLEASE NOTE THAT WE HAVE 3 SIZES OF SPACES AVAILABLE:

12X12-\$60.00

12X24-\$95.00

24X24-\$165.00

ELECTRICITY IS AVAILABLE AT SOME SITES FOR \$20.00

**You cannot break down your booth until 5pm or after!
Absolutely NO EXCEPTIONS!!**

Late fee after October 20, 2017 is \$ 25.00

NO REFUNDS AFTER OCTOBER 1, 2017 - NO EXCEPTIONS!!

We encourage demonstrations, as they will attract the attention of the crowd to your area. This creates interest and will hopefully increase your sales.

Space placement is made in the order applications are received and by electrical needs. If you would like the same spot as last year, please give us your location number and we will make every effort to accommodate you. Acceptance letters will be mailed early October 2017. When you receive your acceptance letter, a detailed map will be included.

We look forward to seeing you there,

Florida Forest Festival Board & Staff